

New engine control unit ILEC-TB 05

- Complete operation with one switch
- Warnings, monitoring and information output via display



The new electronic engine control unit **ILEC-TB 05** was conceived under the same principles.

What is new:

- Ignition + extending/retracting + electrical fuel pump activated via one switch.
- A LCD-display, which shows control information, operation advices, warning - and error messages.
- The Menu push-button furthers the possibility to display additional information and adjust several settings.

Operation:

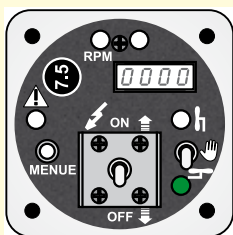
Extending:



- **Ignition On**
- **Speed**
- **Deko handle**
- **Engine running**

Power plant extends completely, the electrical fuel pump is switched on (Display is blinking "FUEL" when the fuel shut-off valve is not completely open)
110 to 120 km/h
The display shows the operating advices to pull back the Deko handle until the sufficient RPM for starting is reached. In contrast to a normal two-blade prop, is the Schempp-Hirth five-blade prop more effective (windmill effect). Therefore it reach the minimum start - RPM faster. The electrical fuel pump is switched off automatically after the engine begins to run.

Retracting:



- **Ignition Off**

Power plant retracts automatically within the shortest time.

Refuel, maintenance, and inspections

A manual operation switch allows the manual extending and retracting for refuel, maintenance, and inspections.



SCHEMPH-HIRTH Flugzeug-Vertriebs GmbH

Tel.: +49 (0) 7021 7298 0 - www.schempp-hirth.com